



ITB
CHINA

The Market-
place for
China's Travel
Industry



ITB CHINA 2025

STAND PRICE BOOK

Co-host
环球旅讯
TravelDaily

27 – 29 MAY 2025 | SHANGHAI
itb-china.com

A brand of
MESSE BERLIN
China



BOOTH PACKAGES



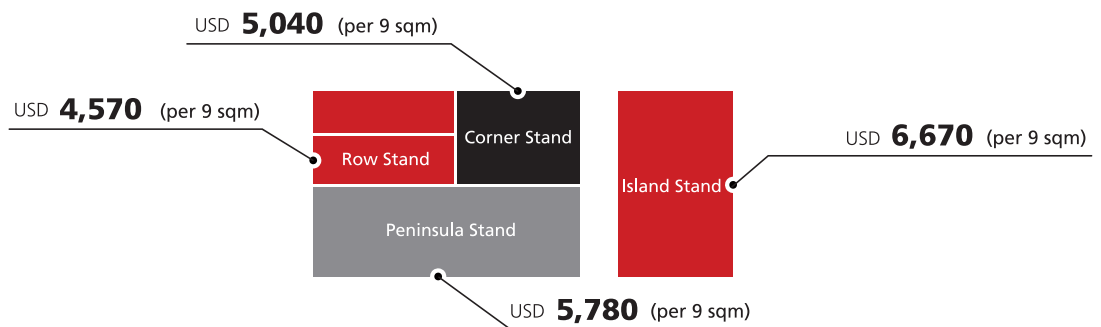
RAW SPACE

Set up your own individual booth construction with a raw space option choose your stand type with one-, two-, three- or four-sided accessibility. Included in the price are 21 pre-scheduled appointments with buyers per 9 sqm space.

Raw space options are only available from 18 sqm and larger. For raw space of more than 400 sqm, the row stand price applies.

Double storey stands will be subject to an additional charge of US\$ 115 for each square meter of the upper structure.

Registration deadline:
until 31 January 2025



*All prices in USD are quoted excluding applicable taxes.

COMPLETE STAND PACKAGE

Carefree participation with ready-made booth construction, including furniture, carpet, lighting, electricity and 21 pre-scheduled appointments with Chinese buyers per 9 sqm space. Premium packages include graphic options, upscale design elements and furnishings.

Basic from

USD **4,810**

Premium from

USD **6,040**



Row
Stand



Corner
Stand



Peninsula
Stand



Island
Stand

*All prices in USD are quoted excluding applicable taxes.

*The fascia board for basic shell schemes cannot be customized.

COMPLETE STAND PACKAGES

Row Basic Shell Scheme

9 sqm

USD 4,810

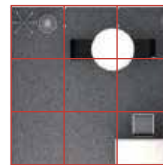
The Basic Shell Scheme includes the following:
Octanorm system walls, 34 cm red fascia panel with company's name and standing out booth number. Carpet color is grey.

- 1 Lockable information counter
- 1 Barstool
- 1 Round discussion table
- 2 Black Shared Acrylic Chairs
- 1 Waste paper basket
- 1 Free-standing coat hanger
- 1 13amp/220V power point/3-pin multiplug
- 3 100W longarm spotlights

- * Digital print RMB 140/sqm
- * Digital print on PVC RMB 205/sqm (max high 2.5mH)



Top View



Front View



814 Grey



Row Basic Shell Scheme

18 sqm

USD 9,620

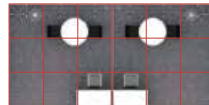
The Basic Shell Scheme includes the following:
Octanorm system walls, 34 cm red fascia panel with company's name and standing out booth number. Carpet color is grey.

- 2 Lockable information counters
- 2 Barstools
- 2 Round discussion tables
- 4 Black Shared Acrylic Chairs
- 2 Waste paper baskets
- 2 Free-standing coat hangers
- 2 13amp/220V power point/3-pin multiplugs
- 6 100W longarm spotlights

- * Digital print RMB 140/sqm
- * Digital print on PVC RMB 205/sqm (max high 2.5mH)



Top View



Front View



814 Grey



Row Premium Shell Scheme

9 sqm

USD 6,040

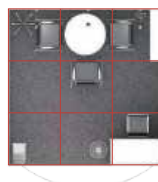
The Premium Shell Scheme includes the following: Octanorm System walls, 50cm curved fascia board with company's name and standing out booth number. Carpet color is grey.

- 1 Lockable information counter, 100 x 50 x 100 cm white
- 1 Barstool
- 1 Round discussion table height: 75 cm
- 3 Black Leather Armchairs
- 1 Waste paper basket
- 1 Brochures rack
- 1 Slope shelf
- 1 Free-standing coat hanger
- 1 13amp/220V power point/3-pin multiplug
- 3 100W longarm spotlights
- 1 digital print on front counter (exhibitor's logo or graphic)

- * Digital print RMB 140/sqm
- * Digital print on PVC RMB 205/sqm (max high 2.5mH)



Top View



Front View



814 Grey



Row Premium Shell Scheme

18 sqm

USD 12,080

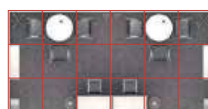
The Premium Shell Scheme includes the following: Octanorm System walls, 50cm curved fascia board with company's name and standing out booth number. Carpet color is grey.

- 2 Lockable information counters, 100 x 50 x 100 cm white
- 2 Barstools
- 2 Round discussion tables height: 75 cm
- 6 Black Leather Armchairs
- 2 Waste paper baskets
- 2 Brochures racks
- 2 Slope shelves
- 2 Free-standing coat hangers
- 2 13amp/220V power point/3-pin multiplugs
- 6 100W longarm spotlights
- 2 digital print on front counters (exhibitor's logo or graphic)

- * Digital print RMB 140/sqm
- * Digital print on PVC RMB 205/sqm (max high 2.5mH)



Top View



Front View



814 Grey



Corner Basic Shell Scheme

9 sqm

USD 5,250

The Corner Basic Shell Scheme includes the following:

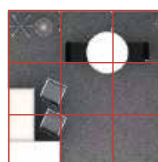
Octanorm system walls, 34 cm red fascia panel with company's name and standing out booth number. Carpet color is grey.

- 2 Lockable information counters
- 2 Barstools
- 1 Round discussion table
- 2 Black Shared Acrylic Chairs
- 1 Waste paper basket
- 1 Free-standing coat hanger
- 1 13amp/220V power point/3-pin multiplug
- 3 100W longarm spotlights

- * Digital print RMB 140/sqm
- * Digital print on PVC RMB 205/sqm (max high 2.5mH)



Top View



Front View



814 Grey



Corner Basic Shell Scheme

18 sqm

USD 10,500

The Corner Basic Shell Scheme includes the following:

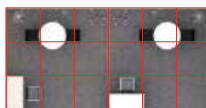
Octanorm system walls, 34 cm red fascia panel with company's name and standing out booth number. Carpet color is grey.

- 2 Lockable information counters
- 2 Barstools
- 2 Round discussion tables
- 4 Black Shared Acrylic Chairs
- 2 Waste paper baskets
- 2 Free-standing coat hangers
- 2 13amp/220V power point/3-pin multiplugs
- 6 100W longarm spotlights

- * Digital print RMB 140/sqm
- * Digital print on PVC RMB 205/sqm (max high 2.5mH)



Top View



Front View



814 Grey



Corner Basic Shell Scheme

27 sqm

USD 15,750

The Corner Basic Shell Scheme includes the following:

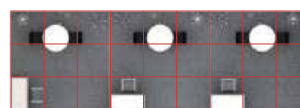
Octanorm system walls, 34 cm red fascia panel with company's name and standing out booth number. Carpet color is grey.

- 3 Lockable information counters
- 3 Barstools
- 3 Round discussion tables
- 6 Black Shared Acrylic Chairs
- 3 Waste paper baskets
- 3 Free-standing coat hangers
- 3 13amp/220V power point/3-pin multiplugs
- 9 100W longarm spotlights

- * Digital print RMB 140/sqm
- * Digital print on PVC RMB 205/sqm (max high 2.5mH)



Top View



814 Grey



Front View



Corner Premium Shell Scheme

9 sqm

USD 6,670

The Corner Premium Shell Scheme includes the following:

Octanorm System walls, 50cm curved fascia board with company's name and standing out booth number. Carpet color is grey.

- 2 Lockable information counters, 100 x 50 x 100 cm white
- 2 Barstools
- 1 Round discussion table height: 75 cm
- 3 Black Leather Armchairs
- 1 Waste paper basket
- 1 Brochures rack
- 1 Slope shelf
- 1 Free-standing coat hanger
- 1 13amp/220V power point/3-pin multiplug
- 3 100W longarm spotlights
- 1 digital print on front counter (exhibitor's logo or graphic)

- * Digital print RMB 140/sqm
- * Digital print on PVC RMB 205/sqm (max high 2.5mH)



Top View



Front View



814 Grey



Corner Premium Shell Scheme

18 sqm

USD 13,340

The Corner Premium Shell Scheme includes the following:

Octanorm System walls, 50cm curved fascia board with company's name and standing out booth number. Carpet color is grey.

- 2 Lockable information counters, 100 x 50 x 100cm white
- 2 Barstools
- 2 Round discussion tables height: 75 cm
- 6 Black Leather Armchairs
- 2 Waste paper baskets
- 2 Brochures racks
- 2 Slope shelves
- 2 Free-standing coat hangers
- 2 13amp/220V power point/3-pin multiplugs
- 6 100W longarm spotlights
- 2 digital print on front counters (exhibitor's logo or graphic)

- * Digital print RMB 140/sqm
- * Digital print on PVC RMB 205/sqm (max high 2.5mH)



Top View



814 Grey



Front View



Corner Premium Shell Scheme

27 sqm

USD 20,010

The Corner Premium Shell Scheme includes the following:

Octanorm System walls, 50cm curved fascia board with company's name and standing out booth number. Carpet color is grey.

- 3 Lockable information counters, 100 x 50 x 100 cm white
- 3 Barstools
- 3 Round discussion tables height: 75 cm
- 9 Black Leather Armchairs
- 3 Waste paper baskets
- 3 Brochures racks
- 3 Slope shelves
- 3 Free-standing coat hangers
- 3 13amp/220V power point/3-pin multiplugs
- 9 100W longarm spotlights
- 3 digital print on front counters (exhibitor's logo or graphic)

- * Digital print RMB 140/sqm
- * Digital print on PVC RMB 205/sqm (max high 2.5mH)



Top View



814 Grey



Front View



Corner Premium Shell Scheme

36 sqm

USD 26,680

The Corner Premium Shell Scheme includes the following:

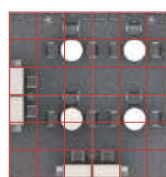
Octanorm System walls, 50cm curved fascia board with company's name and standing out booth number. Carpet color is grey.

- 4 Lockable information counters, 100 x 50 x 100 cm white
- 4 Barstools
- 4 Round discussion tables height: 75 cm
- 12 Black Leather Armchairs
- 4 Waste paper baskets
- 4 Brochures racks
- 4 Slope shelves
- 4 Free-standing coat hangers
- 4 13amp/220V power point/3-pin multiplugs
- 12 100W longarm spotlights
- 4 digital print on front counters (exhibitor's logo or graphic)

- * Digital print RMB 140/sqm
- * Digital print on PVC RMB 205/sqm (max high 2.5mH)



Top View



Front View



814 Grey



Peninsula Basic Shell Scheme

27 sqm

USD 18,220

27sqm Peninsula Basic Shell Scheme includes the following:

Octanorm system walls, 34 cm red fascia panel with company's name and standing out booth number. Carpet color is grey.

- 1 1mht Curve Info Desk
- 1 Barstool
- 3 Round discussion tables
- 12 Black Shared Acrylic Chairs
- 1 Lockable cabinet
- 1 Waste paper basket
- 3 13amp/220V power point/3-pin multiplugs
- 6 100W longarm spotlights

- * Digital print RMB 140/sqm
- * Digital print on PVC RMB 205/sqm (max high 2.5mH)



Top View



Front View



814 Grey



Peninsula Premium Shell Scheme

27 sqm

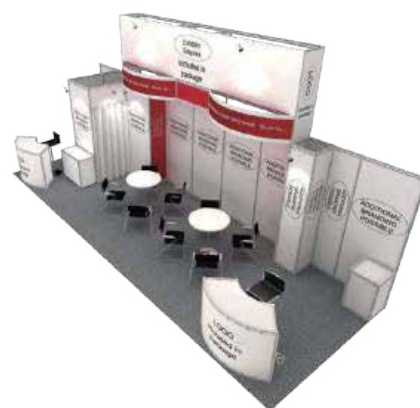
USD 22,950

27sqm Peninsula Premium Shell Scheme includes the following:

Octanorm System walls, 50cm curved fascia board with company's name and standing out booth number. Carpet color is grey.

- 2 1mht Curve Info Desks
- 2 Barstools
- 2 Round discussion tables
- 8 Black Leather Armchairs
- 2 Lockable cabinets
- 1 Waste paper basket
- 3 13amp/220V power point/3-pin multiplugs
- 6 100W longarm spotlights
- 2 Display Plinths 500lx500wx800mmh

- * Digital print RMB140/sqm
- * Digital print on PVC RMB 205/sqm (max high 2.5mH)



Top View



Front View



814 Grey



Peninsula Basic Shell Scheme

36 sqm

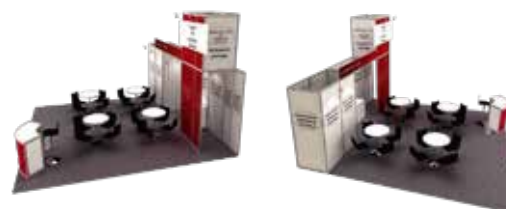
USD 24,650

36sqm Peninsula Basic Shell Scheme includes the following:

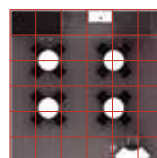
Octanorm system walls, 34 cm red fascia panel with company's name and standing out booth number. Carpet color is grey.

- 1 1mht Curve Info Desk
- 1 Barstool
- 4 Round discussion tables
- 16 Black Shared Acrylic Chairs
- 1 Lockable cabinet
- 1 Waste paper basket
- 3 13amp/220V power point/3-pin multiplugs
- 6 100W longarm spotlights

- * Digital print RMB 140/sqm
- * Digital print on PVC RMB 205/sqm (max high 2.5mH)



Top View



Front View



814 Grey



Peninsula Premium Shell Scheme

36 sqm

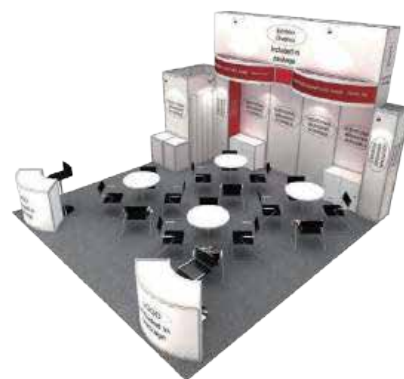
USD 30,600

36sqm Peninsula Premium Shell Scheme includes the following:

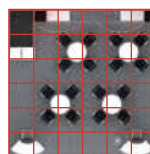
Octanorm System walls, 50cm curved fascia board with company's name and standing out booth number. Carpet color is grey.

- 2 1mht Curve Info Desks
- 2 Barstools
- 4 Round discussion tables
- 16 Black Leather Armchairs
- 2 Lockable cabinets
- 1 Waste paper basket
- 4 13amp/220V power point/3-pin multiplugs
- 8 100W longarm spotlights
- 2 Display Plinths 500lx500wx800mmh

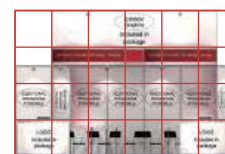
- * Digital print RMB 140/sqm
- * Digital print on PVC RMB 205/sqm (max high 2.5mH)



Top View



Front View



814 Grey



Peninsula Basic Shell Scheme

54 sqm

USD 36,970

54sqm Peninsula Basic Shell Scheme includes the following:

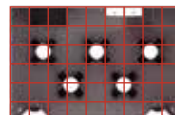
Octanorm system walls, 34 cm red fascia panel with company's name and standing out booth number. Carpet color is grey.

- 2 1mht Curve Info Desks
- 2 Barstools
- 5 Round discussion tables
- 20 Black Shared Acrylic Chairs
- 2 Lockable cabinets
- 2 Waste paper baskets
- 6 13amp/220V power point/3-pin multiplugs
- 12 100W longarm spotlights

- * Digital print RMB140/sqm
- * Digital print on PVC RMB 205/sqm (max high 2.5mH)



Top View



Front View



814 Grey



Peninsula Premium Shell Scheme

54 sqm

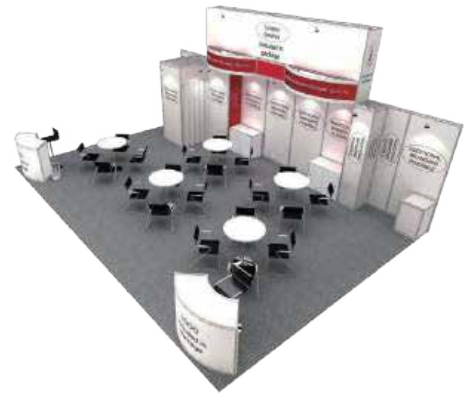
USD 45,900

54sqm Peninsula Premium Shell Scheme includes the following:

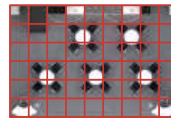
Octanorm System walls, 50cm curved fascia board with company's name and standing out booth number. Carpet color is grey.

- 2 1mht Curve Info Desks
- 2 Barstools
- 5 Round discussion tables
- 20 Black Leather Armchairs
- 2 Lockable cabinets
- 2 Waste paper baskets
- 6 13amp/220V power point/3-pin multiplugs
- 12 100W longarm spotlights
- 2 Display Plinths 500lx500wx800mmh

- * Digital print RMB140/sqm
- * Digital print on PVC RMB 205/sqm (max high 2.5mH)



Top View



Front View



814 Grey



Island Premium Shell Scheme

36 sqm

USD 35,180

36sqm Island Premium Shell Scheme includes the following:

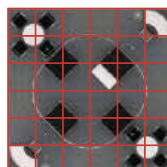
Octanorm System walls, 50cm curved fascia board with company's name and standing out booth number. Carpet color is grey.

- 2 1mht Curve Info Desks
- 2 Barstools
- 2 Round discussion tables
- 8 Black Leather Armchairs
- 1 Lockable cabinet
- 2 Waste paper baskets
- 4 13amp/220V power point/3-pin multiplugs
- 4 100W longarm spotlights

- * Digital print RMB 140/sqm
- * Digital print on PVC RMB 205/sqm (max high 2.5mH)



Top View



Front View



814 Grey



Island Premium Shell Scheme

54 sqm

USD 52,770

54sqm Island Premium Shell Scheme includes the following:

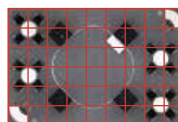
Octanorm System walls, 50cm curved fascia board with company's name and standing out booth number. Carpet color is grey.

- 2 1mht Curve Info Desks
- 2 Barstools
- 4 Round discussion tables
- 16 Black Leather Armchairs
- 1 Lockable cabinet
- 2 Waste paper baskets
- 6 13amp/220V power point/3-pin multiplugs
- 6 100W longarm spotlights

- * Digital print RMB140/sqm
- * Digital print on PVC RMB 205/sqm (max high 2.5mH)



Top View

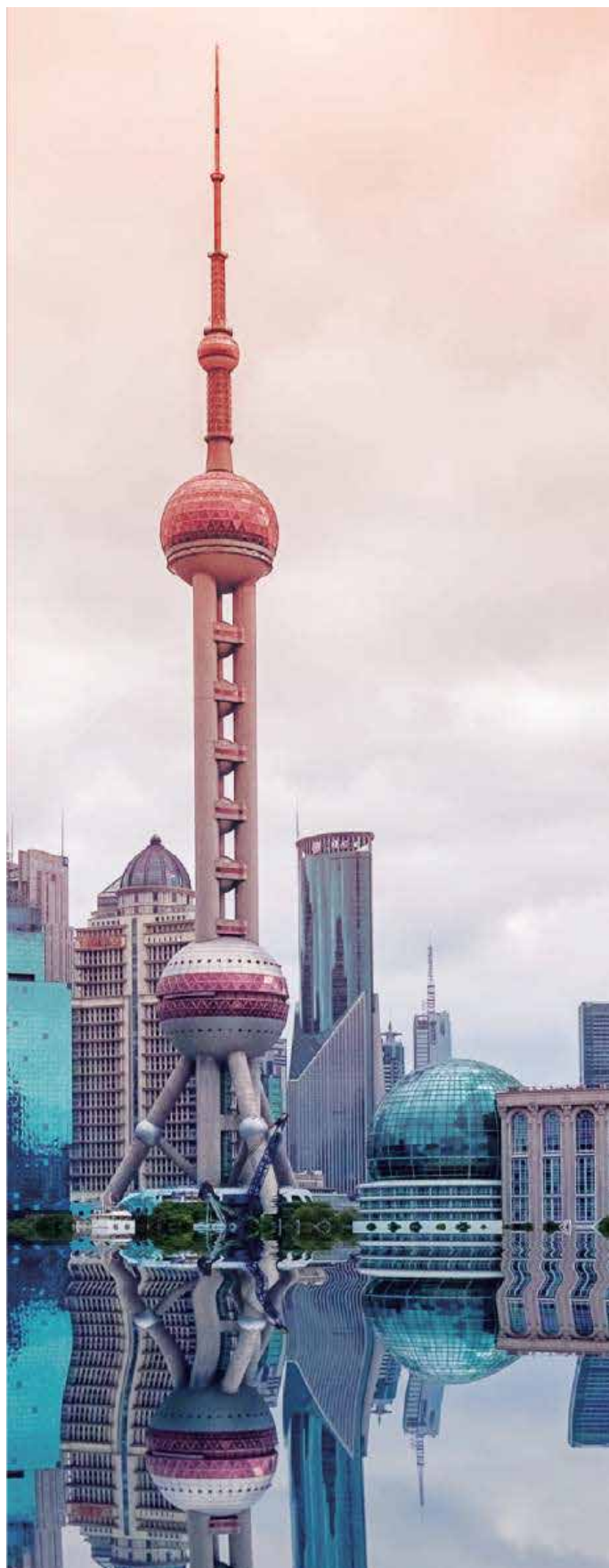
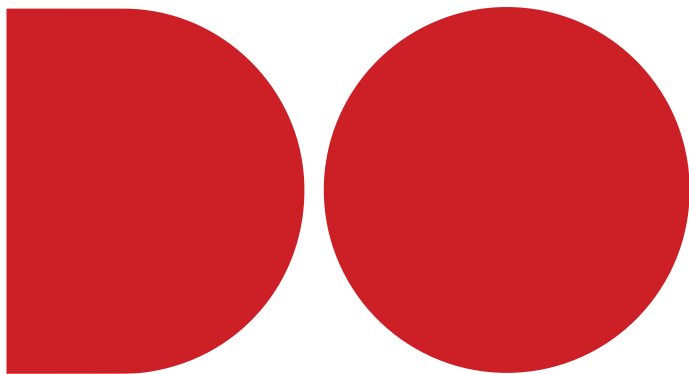


Front View



814 Grey





SHAPE THE TRAVEL INDUSTRY. **TOGETHER.**



ITB
BERLIN

No.1 Trade Show For The Global Travel Market

4-6 March 2025, Berlin
itb-berlin.com



ITB
CHINA

The Leading B2B-Exclusive Trade Show For The
Chinese Travel Market

27-29 May 2025, Shanghai
itb-china.com



ITB
INDIA

Gateway To The Indian Travel Market

2-4 September 2025, Mumbai
itb-india.com



ITB
ASIA

The Leading B2B Trade Show For The Entire
Asian Travel Market

15-17 October 2025, Singapore
itb-asia.com